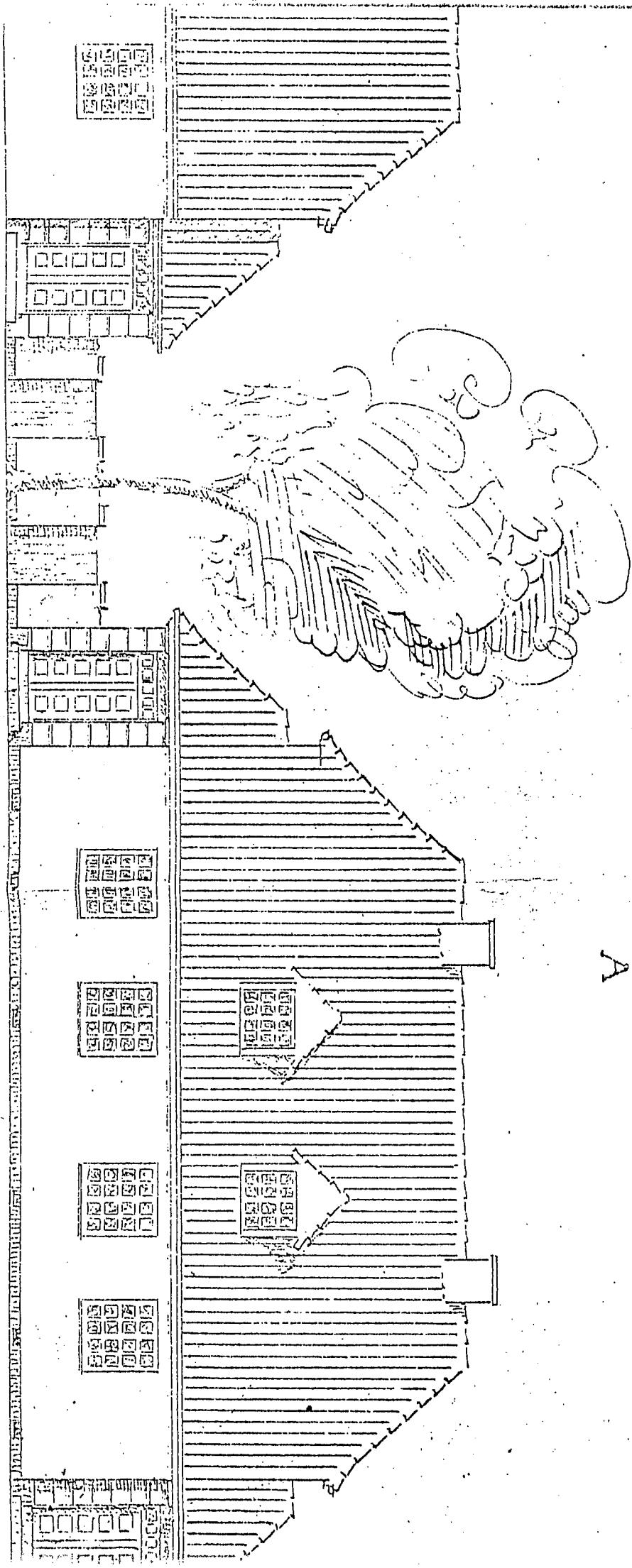


Andels - Byggeforeningen „Helsingør“

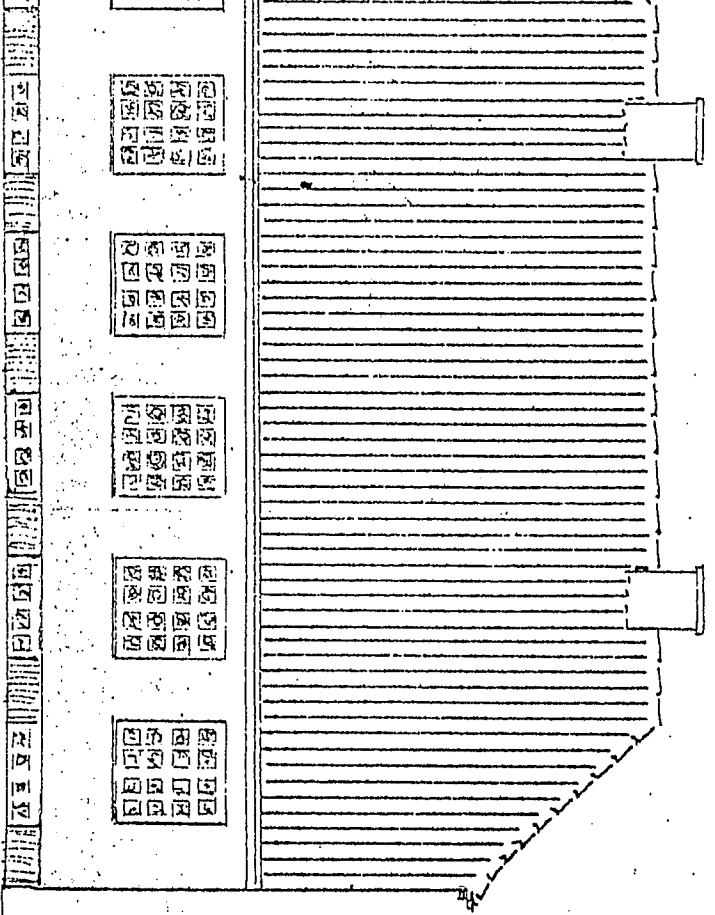
Matr. Nr. 4 af Helsingør Købstads Markjorder.

Dobbeltus

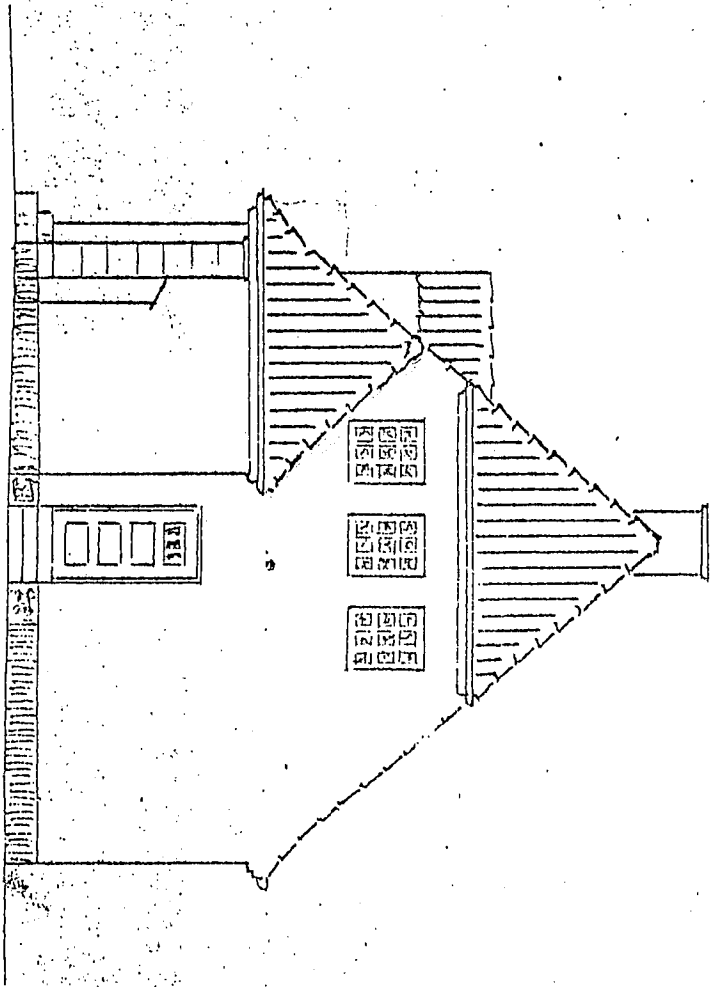
A



Mod Vegen.

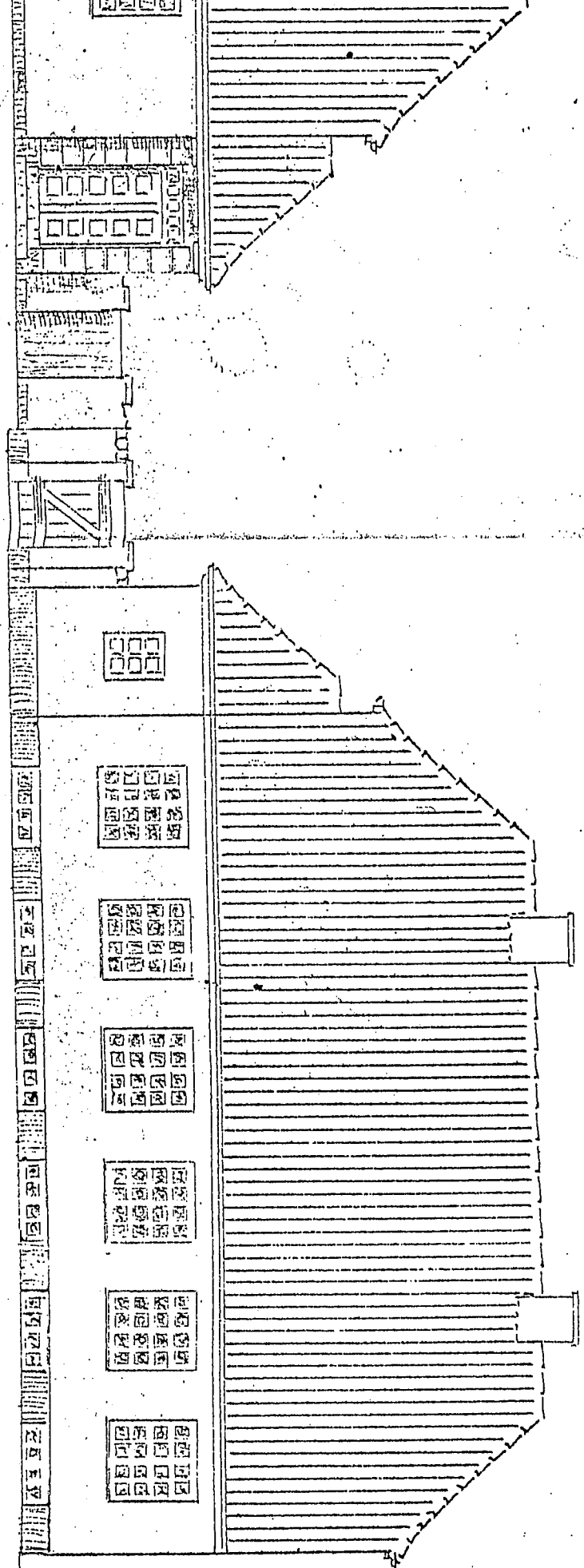


Mod Haven.

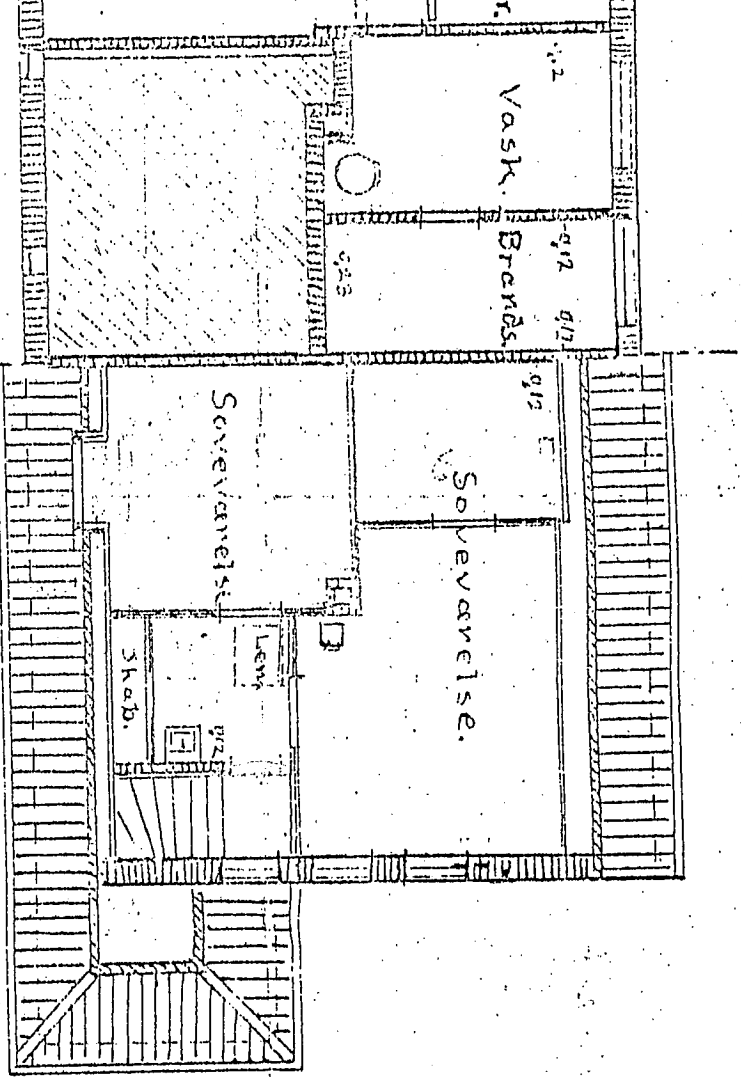


Garl.

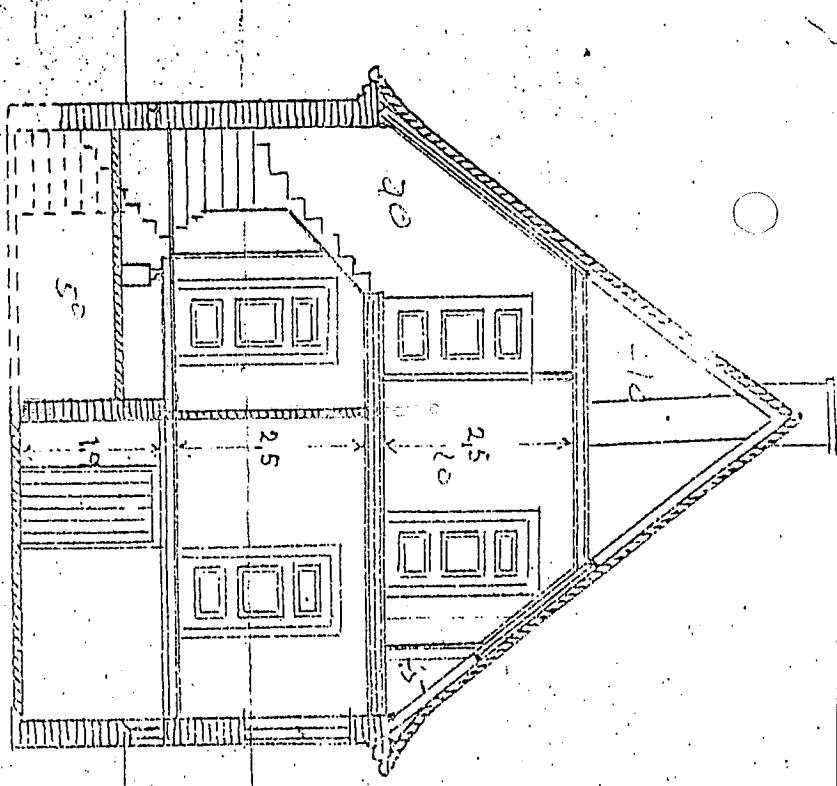
ngem"



Mod Haven.



Tagplan.

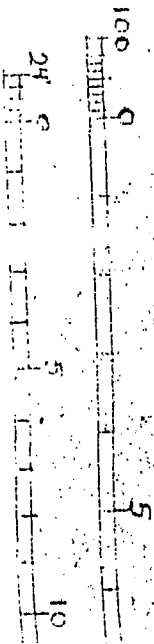
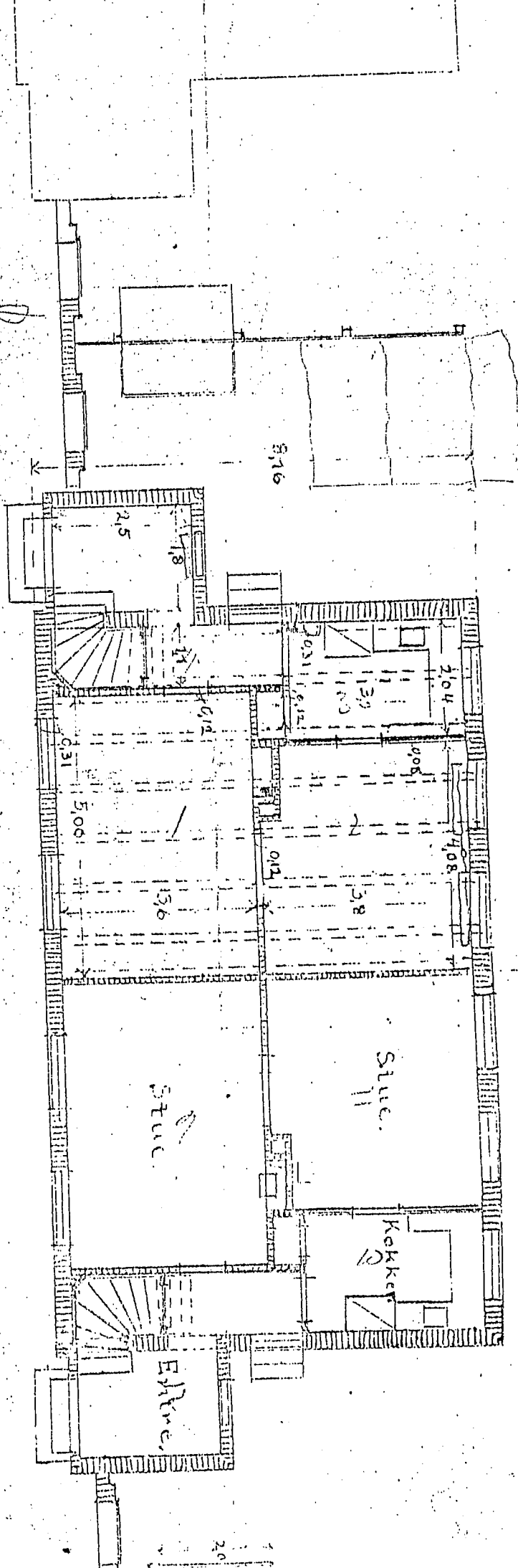


Snit.

H. E. Andersen
 Arkitekt
 Helsingør d. 9/8-21.

15 Meter.
 25 Ødem.

Stueplan. 1.



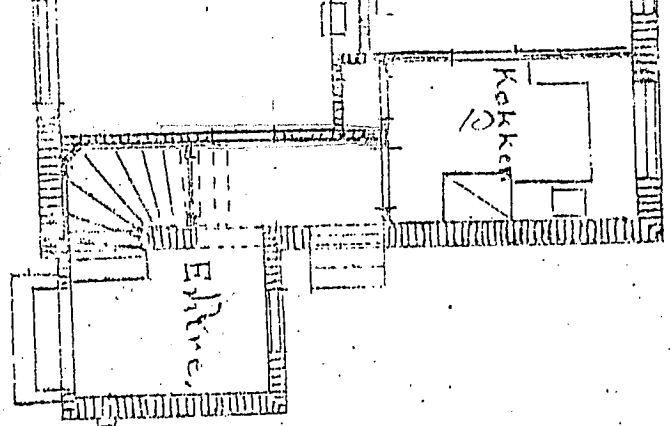
100

6.59

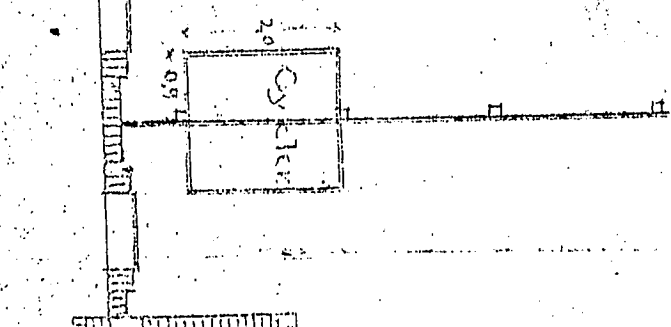
5.9

5

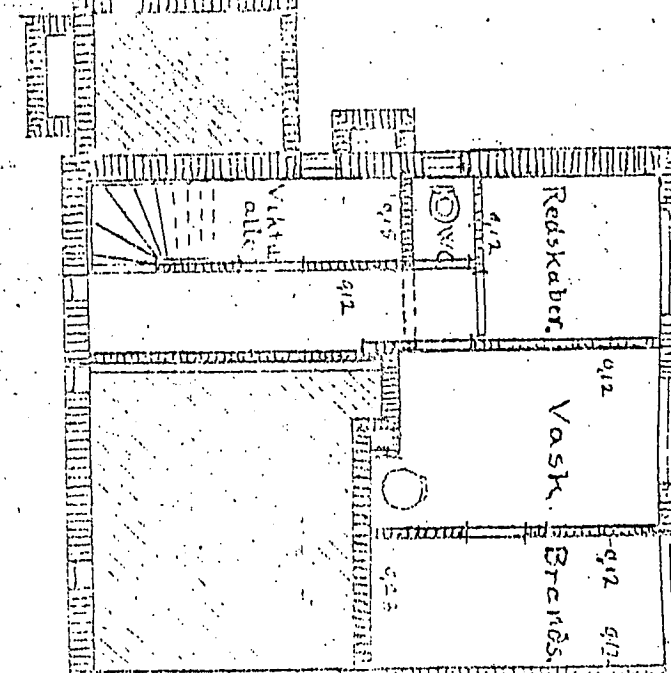
10



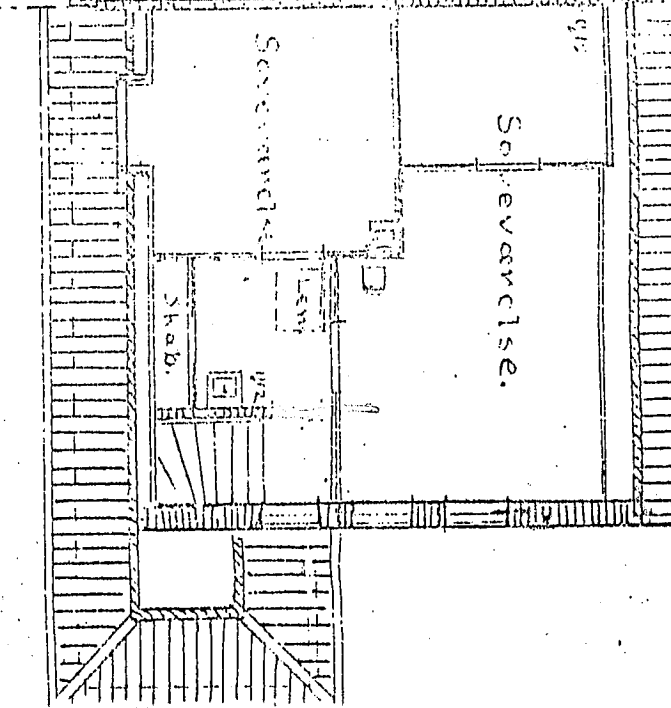
Maal. 1:100



Kælderyplan



Tagplan



15 meter

25 Qlem.

2m

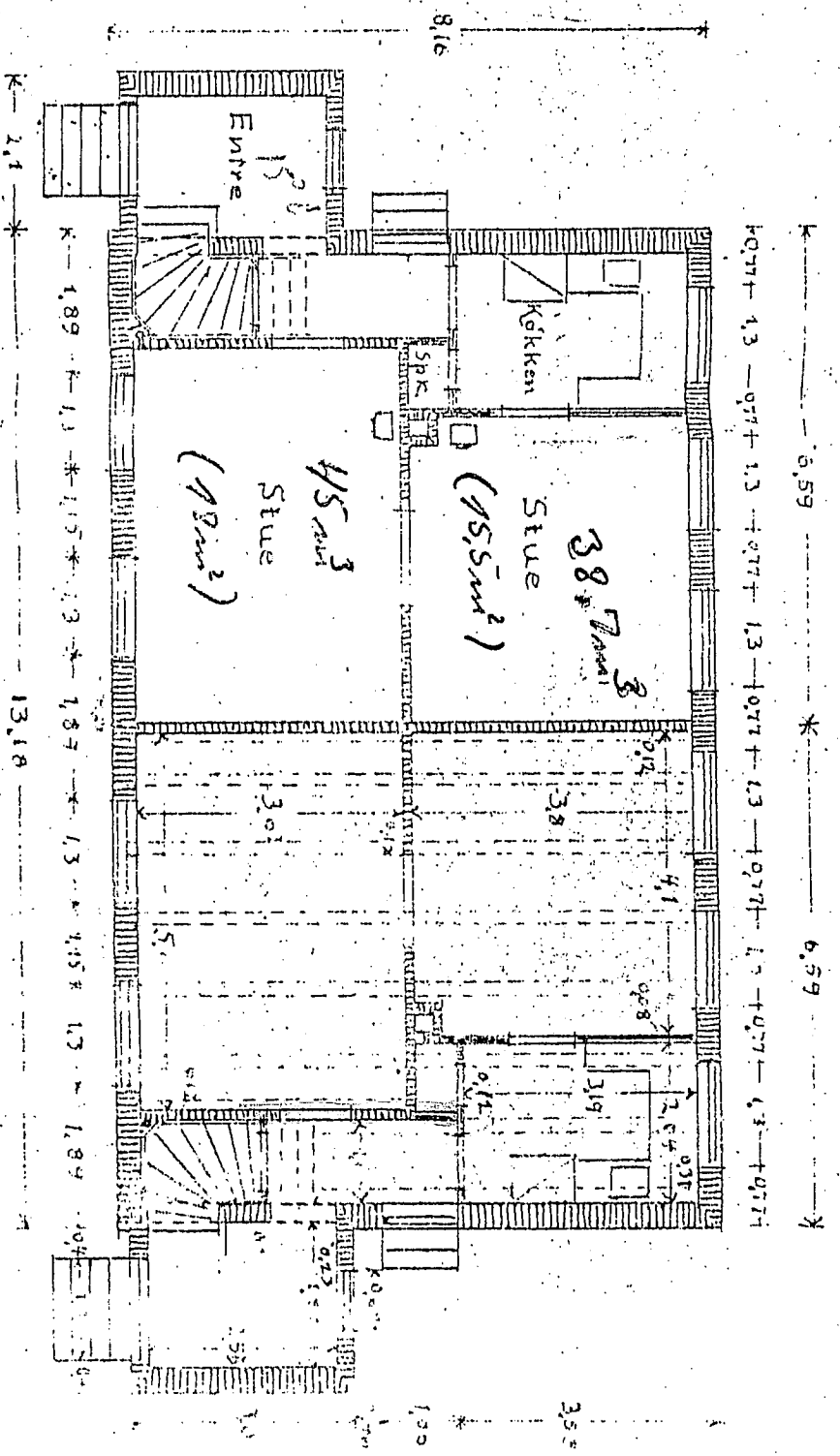
10

10

5

5

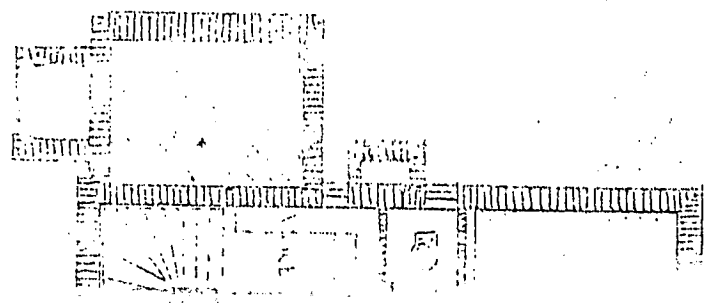
5



Stueplan 2

Facadelængde = 8,75m

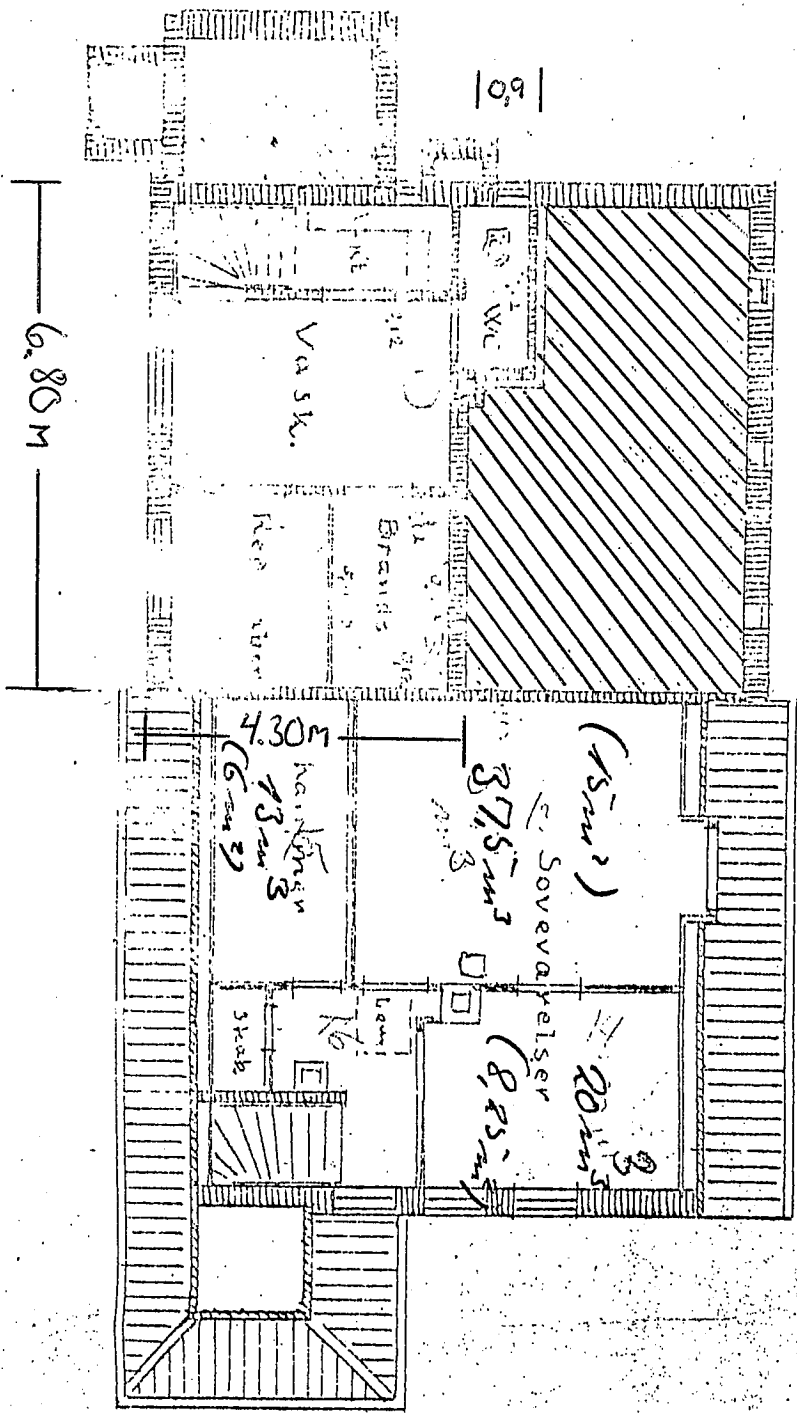
K.



$4,3 \times 6,8 = 29,24$
 $0,9 \times 2,6 = 2,34$
 $\underline{\quad\quad\quad}$
 $31,58 \text{ m}^2$

Stedsingør d. 27/8

2,6 m



Kulderplan 2

Tagplan 2

1:10

Plan 1 anvendes paa Ar
 Plan 2 anvendes paa Arc